



A range of ferruled tube tees, 45° and 90° bends and rolled expansion fittings, along with clamps and seals (EPDM or BUNA), provide a method to install your plant quickly and within budget, while achieving the tightest quality control.

Improved finish and performance from Kleanflow Triclamp ferruled tees and bends meet stringent testing criteria. Suitable for hygienic materials handling in the dairy, food, wine, beverage, health and pharmaceutical industries. The Kleanflow system allows fast and efficient implementation, line inspection and maintenance.

Laboratory testing passes:

- ☒ Tube wall thickness
- ☒ Hydrostatic testing
- ☒ Product contact surface finish
- ☒ Chemical analysis

Exceptionally good quality fittings for any hygienic application.

Proud Members Of
NZSSDA
New Zealand Stainless
Steel Development Association



To find out more about our extensive range of products and services:

- › Steel
- › Pipe, Fittings & Valves
- › Stainless Steel
- › Fastenings
- › Chain & Rigging
- › Rural Products
- › Industrial Products
- › Reinforcing
- › Roofing, Cladding, Rainwater Systems & Purlins

CONTACT US TODAY:
0800 478 335
www.steelandtube.co.nz

TB45



1

TB90



2

TCFS



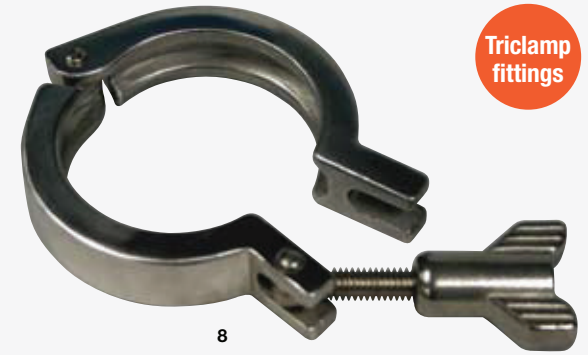
4

TCFM



5

TC



8

Triclamp fittings

TTF



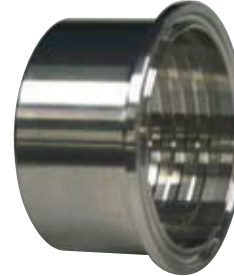
3

TCFL



6

TCFE



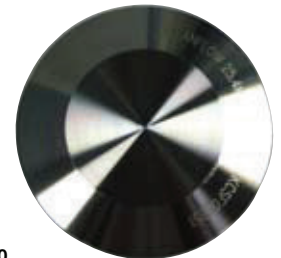
7

TCSE



9

TB



10

Kleanflow

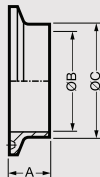
Hygienic Triclamp ferruled fittings

1-3 45°, 90° Bends and tees – 304 grade

Angle	Diameter	Wall	Part number
45° Bend	38.10mm	1.50mm	S38115TBF45
45° Bend	50.80mm	1.50mm	S50815TBF45
90° Bend	38.10mm	1.50mm	S38115TBF90
90° Bend	50.80mm	1.50mm	S50815TBF90
Tee Tube	38.10mm	1.50mm	S38115TTF
Tee Tube	50.80mm	1.50mm	S5081STTF

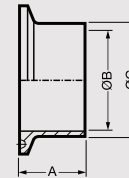
4 Butt weld ferrules – (short) 316 grade

Length (A)	Diameter (C)	Wall	Part number
12.70mm	19.05mm	1.65mm	S191TCFS
12.70mm	25.40mm	1.65mm	S254TCFS
12.70mm	31.80mm	1.65mm	S318TCFS
12.70mm	38.10mm	1.65mm	S381TCFS
12.70mm	50.80mm	1.65mm	S508TCFS
12.70mm	63.50mm	1.65mm	S635TCFS
12.70mm	76.20mm	1.65mm	S762TCFS
15.88mm	101.60mm	2.11mm	S1016TCFS



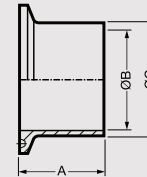
5 Butt weld ferrules – (medium) 316 grade

Length (A)	Diameter (C)	Wall	Part number
21.50mm	25.40mm	1.65mm	S254TCFM
21.50mm	38.10mm	1.65mm	S381TCFM
21.50mm	50.80mm	1.65mm	S508TCFM
21.50mm	63.50mm	1.65mm	S635TCFM
21.50mm	76.20mm	1.65mm	S762TCFM
21.50mm	101.60mm	2.11mm	S1016TCFM
21.50mm	152.40mm	2.77mm	S1524TCFM
21.50mm	203.20mm	2.77mm	S2032TCFM
21.50mm	254.00mm	3.05mm	S2540TCFM



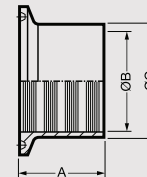
6 Butt weld ferrules – (long) 316 grade

Length (A)	Diameter (C)	Wall	Part number
28.58mm	12.70mm	1.65mm	S127TCFL
28.58mm	25.40mm	1.65mm	S254TCFL
28.58mm	38.10mm	1.65mm	S381TCFL
28.58mm	50.80mm	1.65mm	S508TCFL
28.58mm	63.50mm	1.65mm	S635TCFL
28.58mm	76.20mm	1.65mm	S762TCFL
28.58mm	101.60mm	2.11mm	S1018TCFL
38.10mm	127.00mm	2.77mm	S1270TCFL
38.10mm	152.40mm	2.77mm	S1524TCFL



7 Recessless (expanding) ferrules – 304 grade

Length (A)	Diameter (B)	Wall	Part number
28.58mm	31.80mm	2.17mm	S318TCFE
28.58mm	38.10mm	2.17mm	S381TCFE
33.32mm	50.80mm	2.37mm	S508TCFE
34.93mm	63.50mm	2.57mm	S635TCFE
36.53mm	76.20mm	2.78mm	S762TCFE
38.10mm	101.60mm	3.185mm	S1018TCFE



8 Triclamp – 304 grade

Diameter	Part number
12.70 & 19.05mm	S127TC
25.40 & 38.10mm	S254TC
50.80mm	S508TC
63.50mm	S635TC
76.20mm	S762TC
101.60mm	S1016TC
127.00mm	S1270TC
152.40mm	S1524TC
203.20mm	S2032TC

10 Triblank – 316 grade

Diameter	Part number
12.70 & 19.05mm	S127TB
25.40 & 38.10mm	S254TB
50.80mm	S508TB
63.50mm	S635TB
76.20mm	S762TB
101.60mm	S1018TB
127.00mm	S1270TB
152.40mm	S1524TB
203.00mm	S2032TB

9 Triclamp seal

Diameter	Material	Part number
12.70mm	EDPM BLACK	S127TCSE
19.05mm	EDPM BLACK	S191TCSE
25.40mm	EDPM BLACK	S254TCSE
25.40mm	EDPM BLUE	S254SSB
31.80mm	EDPM BLACK	S318TCSE
38.10mm	EDPM BLACK	S381TCSE
38.10mm	EDPM BLUE	S318SSB
50.80mm	EDPM BLACK	S508TCSE
50.80mm	EDPM BLUE	S508SSB
63.50mm	EDPM BLACK	S635TCSE
63.50mm	EDPM BLUE	S635SSB
76.20mm	EDPM BLACK	S762TCSE
76.20mm	EDPM BLUE	S762SSB
101.60mm	EDPM BLACK	S1016TCSE
101.60mm	EDPM BLUE	S1016SSB
127.00mm	EDPM BLACK	S1270TCSE
127.00mm	EDPM BLUE	S1270SSB
152.40mm	EDPM BLACK	S1524TCSE
203.00mm	EDPM BLACK	S2032TCSE