

# MAI I TE PAPA KI RUNGA

ARATOHU HUA MŌ TE RŌPŪ

- NGĀ OTINGA MŌ TE**
- › HANGA ME TE HANGATANGA
  - › WHAKANAO ME TE AHUMAHI
  - › TUAWHENUA

# TE WHAKATIPU I TE KAHA ME TE MANAWAROA

Kei ngā wāhi katoa te maitai – kei ō tātau kāinga, ngā wāhi mahi, i runga pāmu, ngā rori, ngā piriti, me ngā wheketere. Ka tiro koe i ngā wāhi katoa, kei te whakamahia te maitai hei whakakaha me te mauroa. Koinei tētahi o ngā tino rauemi noa e whakamahia ana puta noa i te ao, i kōwhiria nā te urutau, ngā taumata mahinga tiketike me te tōtikatanga.

He kamupene whakahī a Steel & Tube nō Aotearoa me tētahi kaiwhakarato otinga maitai, mai i ngā nati me ngā pine ki te tuanui, te whakapakari me ngā papa rahoraho.

I ia rā, kei te āwhina mātau ki te whakatipu i te kaha me te manawaroa i ētahi o ngā hanganga hira rawa me ngā whanaketanga hangatanga i te motu, ā, puta noa i ngā rāngai maha o te ōhanga.

## NGĀ KAUPAPA

---

<b>Hanga me te Hangatanga</b>	<b>4-9</b>
<b>Whare noho / Arumoni / Hanganga</b>	

---

<b>Whakanao me te Ahumahi</b>	<b>10-11</b>
-------------------------------	--------------

---

<b>Tuawhenua</b>	<b>12-13</b>
------------------	--------------

---

<b>Kounga, haumarua me te Toitūtanga</b>	<b>14-15</b>
--	--------------

---

<b>Ngā mōhiohia whakapā</b>	<b>16</b>
-----------------------------	-----------

---



**HANGA ME TE  
HANGATANGA**

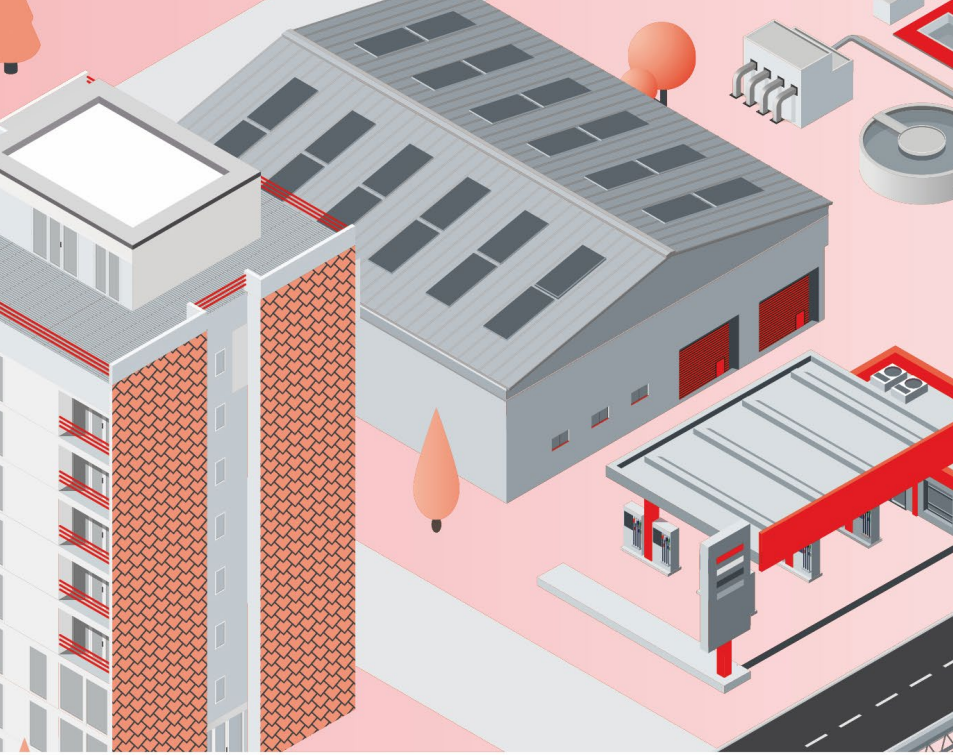


**WHAKANAO ME  
TE AHUMAHĪ**



**TUAWHENUA**





# MAI TE PAPA KI RUNGA

## TE WĀHI KOTAHI MŌ Ō HIAHIA MAITAI KATOA

Maitai

Tuanui me ngā papapātū o waho

Raumata me te whakakaha

Maitai waikura-kore

ComFlor

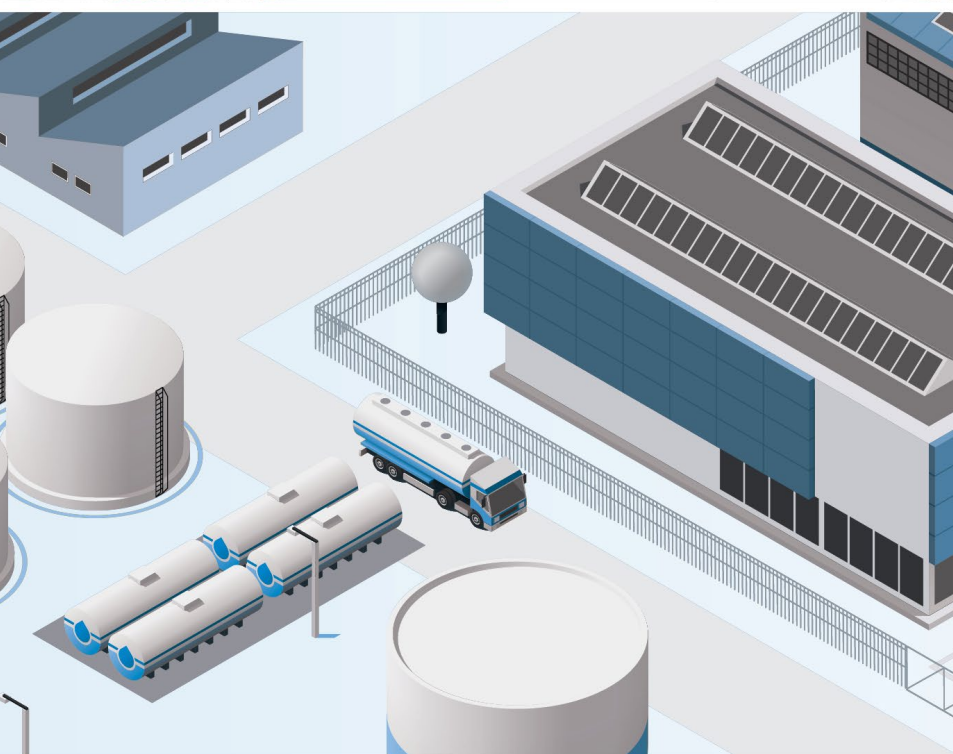
Ngā tautoko paipa me te waea

Tuawhenua me te hanga taiepa a  
hurricane

Ngā whakakikī

Mekameka me te pūnaha taura

Ngā Paipa Wai me Ngā Manga

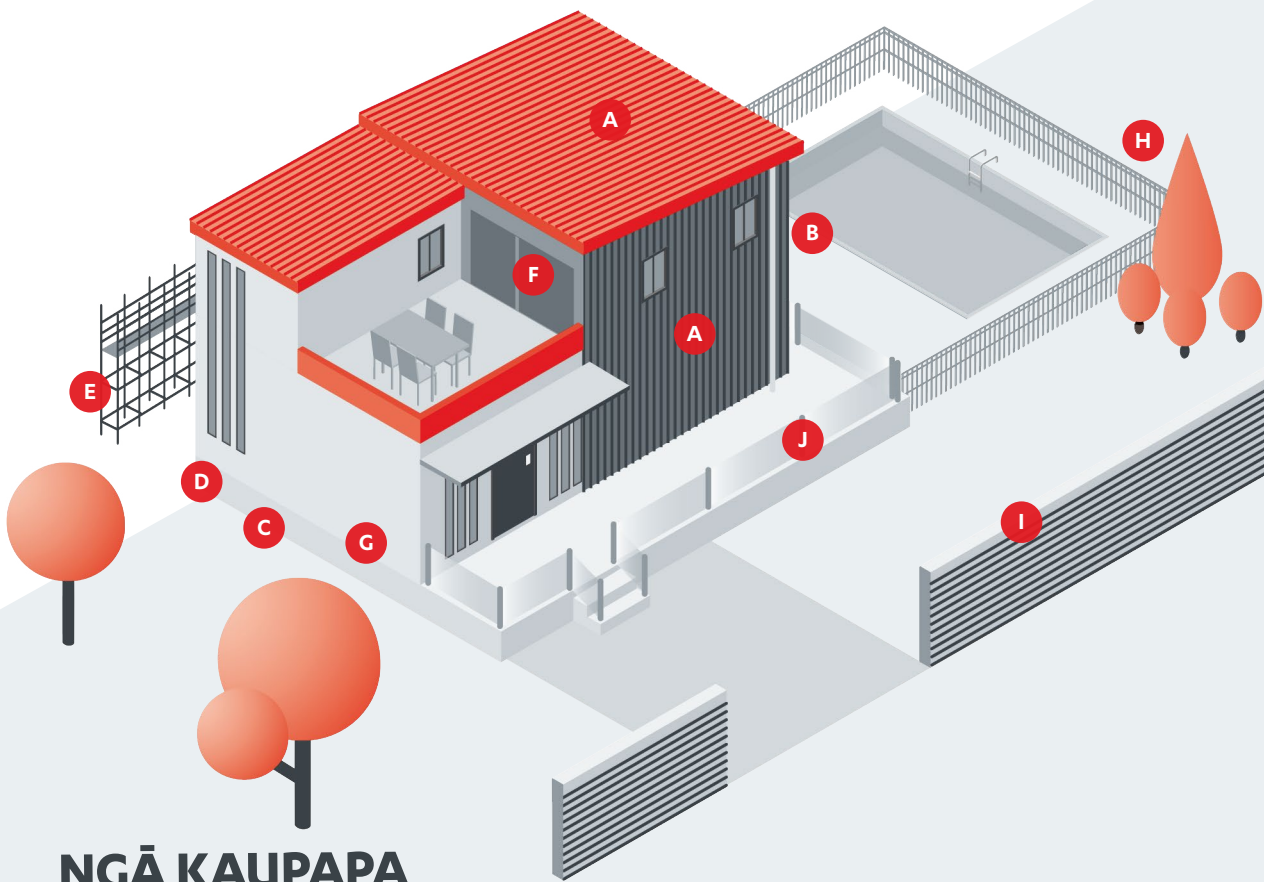


# WHARE NOHO

- TUANUI • PAPAPĀTŪ O WAHO • NGĀ OTINGA WAIUA
- MAHI TAIIPA • MAITAI WAIKURA-KORE
- RAUMATA ME TE WHAKAKAHA • MAITAI • WHAKAKIKĪ

Mai i te papa ki runga, e whakaratoa ana e Steel & Tube ngā tūmomo hua maitai, ratonga me ngā otinga matawhānui mō te hanga whare noho. E hia tau e whakarato ana ki te ahumahi hanga, ā, e mārāma ana mātau ki te māketē o konei.

Ina whiriwhiri ana i tētahi tuanui, ngā papapātū o waho mō tō kāinga hou, kāore i tua atu i te wā hei whakamātautau. He kaiwhakarato a Steel & Tube i ngā rawa tuanui COLORSTEEL®, i hoahoatia ki te whakahihiri... me te tū pakari mō ake tonu.



## NGĀ KAUPAPA

- › Te Whanaketanga Wharenoho A Brae, Pine Harbour, Tāmaki Makaurau - Tuanui me te Papapātū o Waho
- › Teihana Patuahi O Kingsland Ngā Wharenoho Iti, Tāmaki Makaurau - Tuanui me te Papapātū o Waho
- › Papakāinga Kaumātua O Summerset, Kirikiriroa - Raumata me te Whakakaha
- › Hanga Whare Hou I 596 Te Rori O Wainui, Whāingaroa - Raumata me te Whakakaha
- › The Quest Apartments, Tauranga – Ngā Tautoko Paipa me te Waea
- › Ngā Wharenoho Iti
- › Ngā Whare Noho
- › Ngā Wharetikoke Nohoanga
- › Ngā Wāhi Noho Whare Wānanga
- › Ngā Whare Hītori Me Ngā Whare Taonga
- › Ngā Kāinga Okioki

Tirohia te whānuitanga o ngā hua i [www.steelandtube.co.nz/products](http://www.steelandtube.co.nz/products)





**A** TUANUI MAITAI ME NGĀ PAPAPĀTŪ O WAHO



**B** NGĀ OTINGA WAIUA



**C** RAUMATA PAPA WHARENOHO ME TE WHAKAKAHA PAPA RAIMA



**D** NGĀ POU ME NGĀ PAE



**E** PAIPA TĪREWA



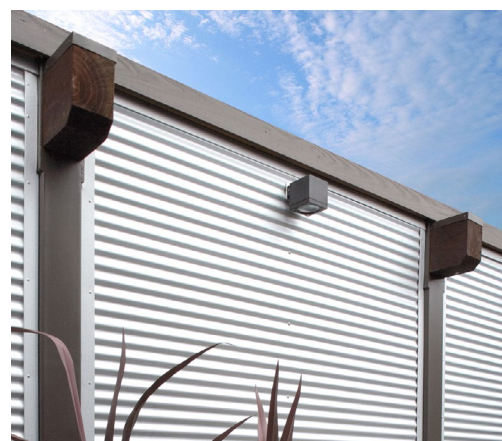
**F** WHAKAOTINGA WHAKARĀKEI RIMEX



**G** NGĀ PINE HANGATANGA



**H** TAIĒPA PAPA



**I** TAIĒPA MAITAI



**J** ĀRAI MAHAU

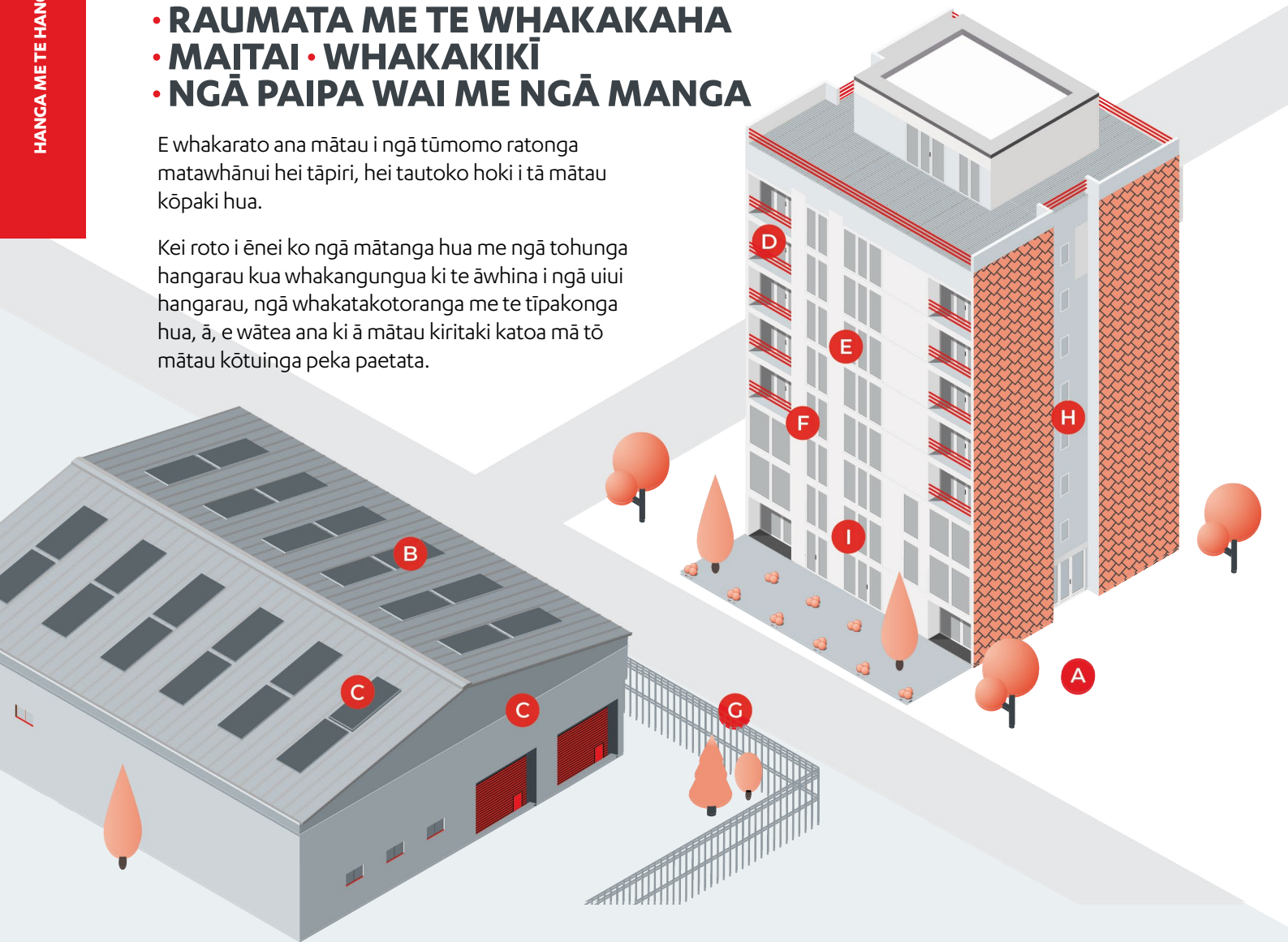


# ARUMONI

- TUANUI • PAPAPĀTŪ O WAHO • NGĀ OTINGA WAIUA
- MAHI TAIEPA • MAITAI WAIKURA-KORE
- RAUMATA ME TE WHAKAKAHA
- MAITAI • WHAKAKIKĪ
- NGĀ PAIPA WAI ME NGĀ MANGA

E whakarato ana mātau i ngā tūmomo ratonga matawhānui hei tāpiri, hei tautoko hoki i tā mātau kōpaki hua.

Kei roto i ēnei ko ngā mātanga hua me ngā tohunga hangarau kua whakangungua ki te āwhina i ngā uiui hangarau, ngā whakatakotoranga me te tīpakonga hua, ā, e wātea ana ki ā mātau kiritaki katoa mā tō mātau kōtuinga peka paetata.

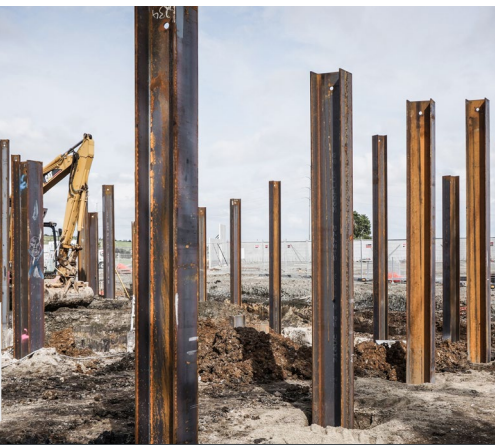


## NGĀ KAUPAPA

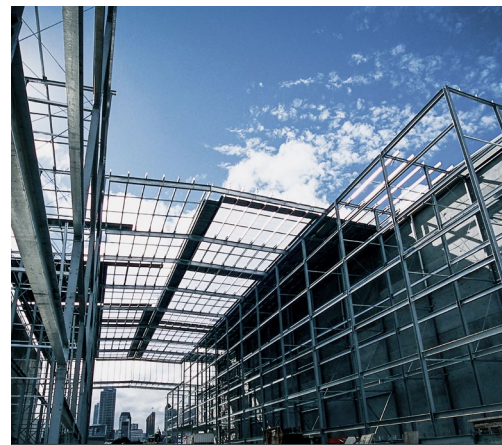
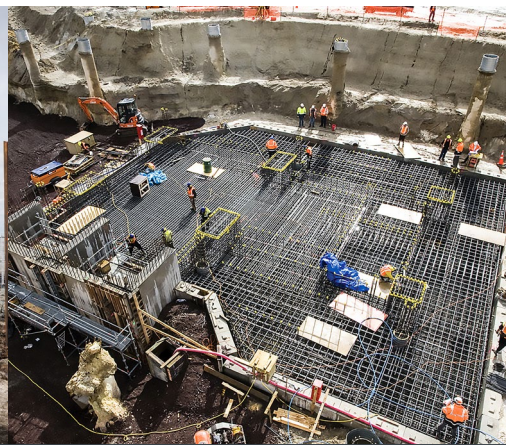
- › Garden City Helicopters Aviation, Ōtautahi - Tuanui Me Te Papapātū O Waho
- › Te Kura O Freemans Bay, Tāmaki Makaurau - Tuanui Me Te Papa O Waho
- › Kaupapa Gondola O Whakapapa – Sky Waka, Taupō - Raumata Me Te Whakakaha
- › Ngā Pourewa Rama O Seddon Park, Kirikiriroa - Raumata Me Te Whakakaha
- › Whare Len Lye, Ngāmotu - Maitai Waikura-Kore
- › Ngā Whare Putunga me Ngā Wheketere
- › Ngā Wāhi Hokohoko
- › Ngā Tari me Ngā Hōtera
- › Ngā Whare Pikitia
- › Ngā Whare Hākinakina
- › Ngā Whare Herehere
- › Ngā Whare Kura Me Ngā Whare Wānanga

Tirohia te whānuitanga o ngā hua i [www.steelandtube.co.nz/products](http://www.steelandtube.co.nz/products)

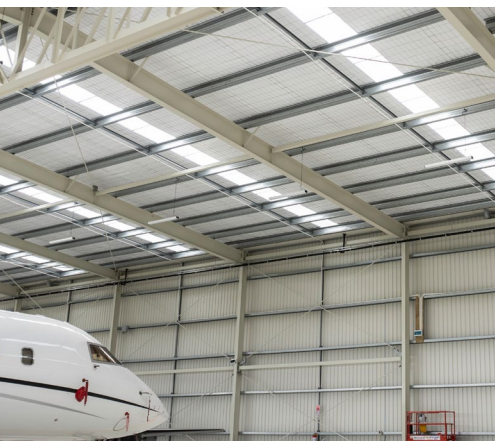




**A** NGĀ WĀHANGA POUTOKA UB ME TE RAUMATA



**B** MAITAI HANGANGA, HST PURLINS & GIRTS



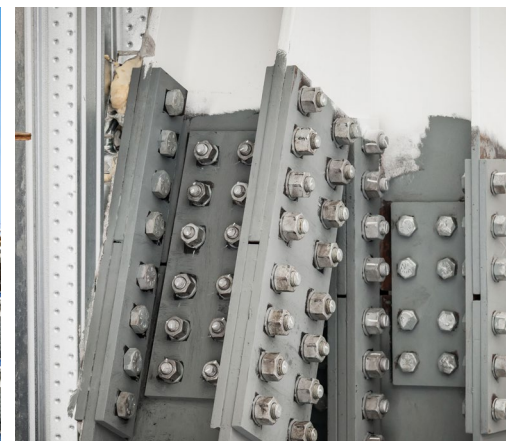
**C** TUANUI ME NGĀ PAPAPĀTŪ O WAHO



**D** NGĀ OTINGA MAITAI HANGANGA UAU



**E** COMFLOR



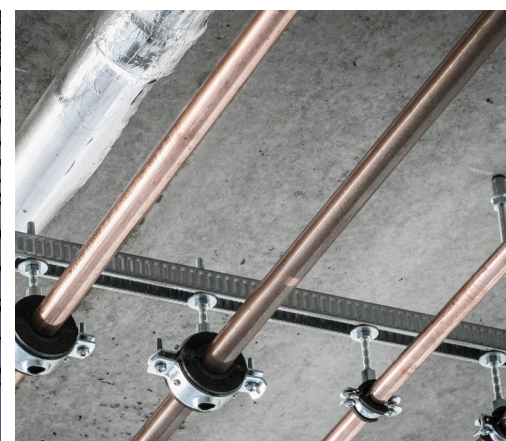
**F** PERETI ME NGĀ PINE HANGANGA KUA WIRIA KĒ



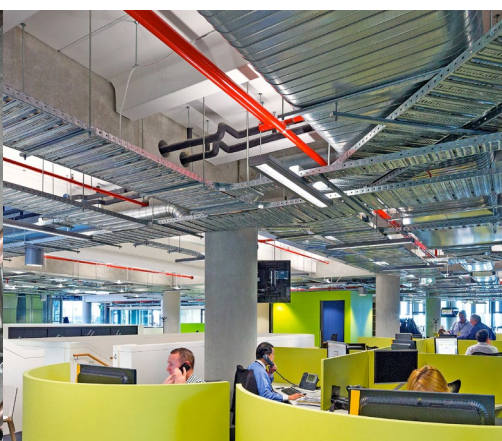
**G** TAIIPA HAUMARUTANGA ME TE CHAINLINK



**H** RIMEX



**I** NGĀ TAUTOKO PAIPA ME TE WAEA

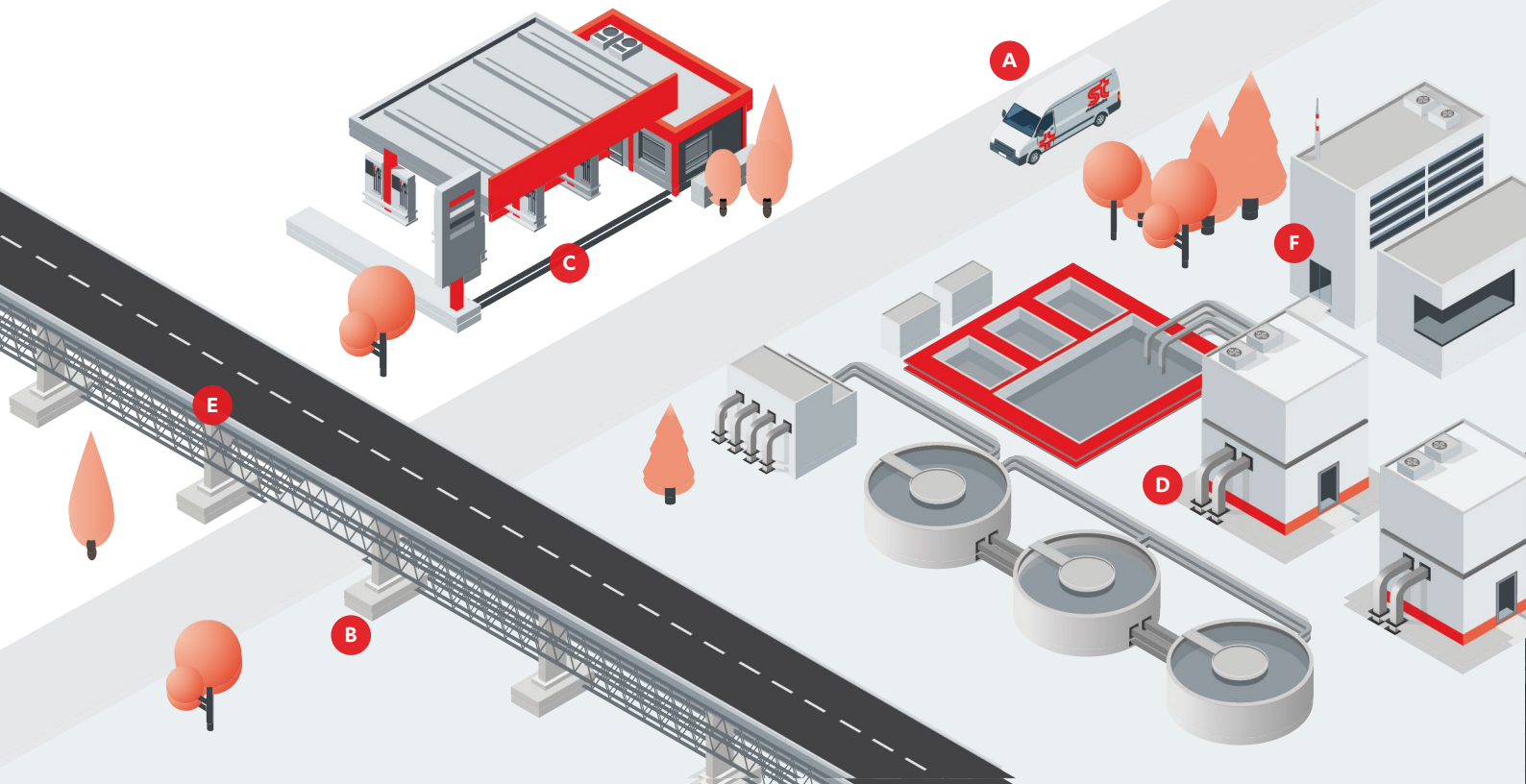




# HANGANGA

- MAITAI WAIKURA-KORE • RAUMATA ME TE WHAKAKAHA
- MAITAI • NGĀ TAUTOKO PAIPA ME TE WAEA
- MEKAMEKA ME TE PŪNAHA TAURA
- NGĀ PAIPA WAI ME NGĀ MANGA • WHAKAKIKĪ

He tino whānui tō mātau matatau ki te whakarato tautoko haere tonu ki ngā kaporeihana nui, te whakarato i ngā kaupapa tino nui, otirā te whakatutuki i ngā whakaritenga o ia rā o te hanga hua maitai.

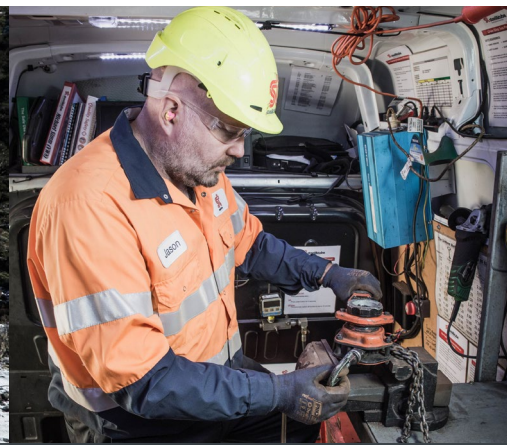


## NGĀ KAUPAPA

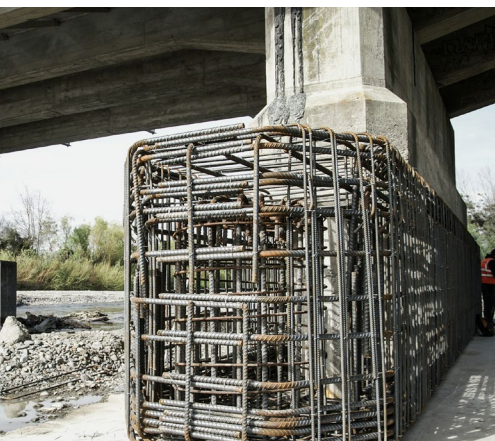
- › Ngā Whakahounga Ki Te Punahiko Wai O Karapiro, Karapiro - Raumata Me Te Whakakaha
- › Te Kaupapa O Pūhoi Ki Mahurangi, Tāmaki Makaurau - Raumata Me Te Whakakaha
- › City Rail Link, Tāmaki Makaurau - Raumata Me Te Whakakaha
- › Pūkhatanga – Hanga Metarahi Me Te Taumaha
- › Tari Kāwanatanga
- › Hāwaiwai
- › Ngā Rōpū Hapori
- › Ngā Kaiwiri Puna
- › Ngā Hōhipera
- › Ngā Taunga Rererangi
- › Ngā Tauranga Moana
- › Whakanao Hiko
- › Tūnuku & Ngā Piriti

Tirohia te whānuitanga o ngā hua i [www.steelandtube.co.nz/products](http://www.steelandtube.co.nz/products)





**A** WHAKAMĀTAUTAU MEKAMEKA ME TE PŪNAHA TAURA



**B** NGĀ PAEKATI REO I ĀTA HANGAIA



**C** NGĀ TAIAWA RAIMA WAERAU ORCA

**D** TAKIRERE



**E** NGĀ WĀHANGA PĀRUA

**F** WHAKAKIKĪ

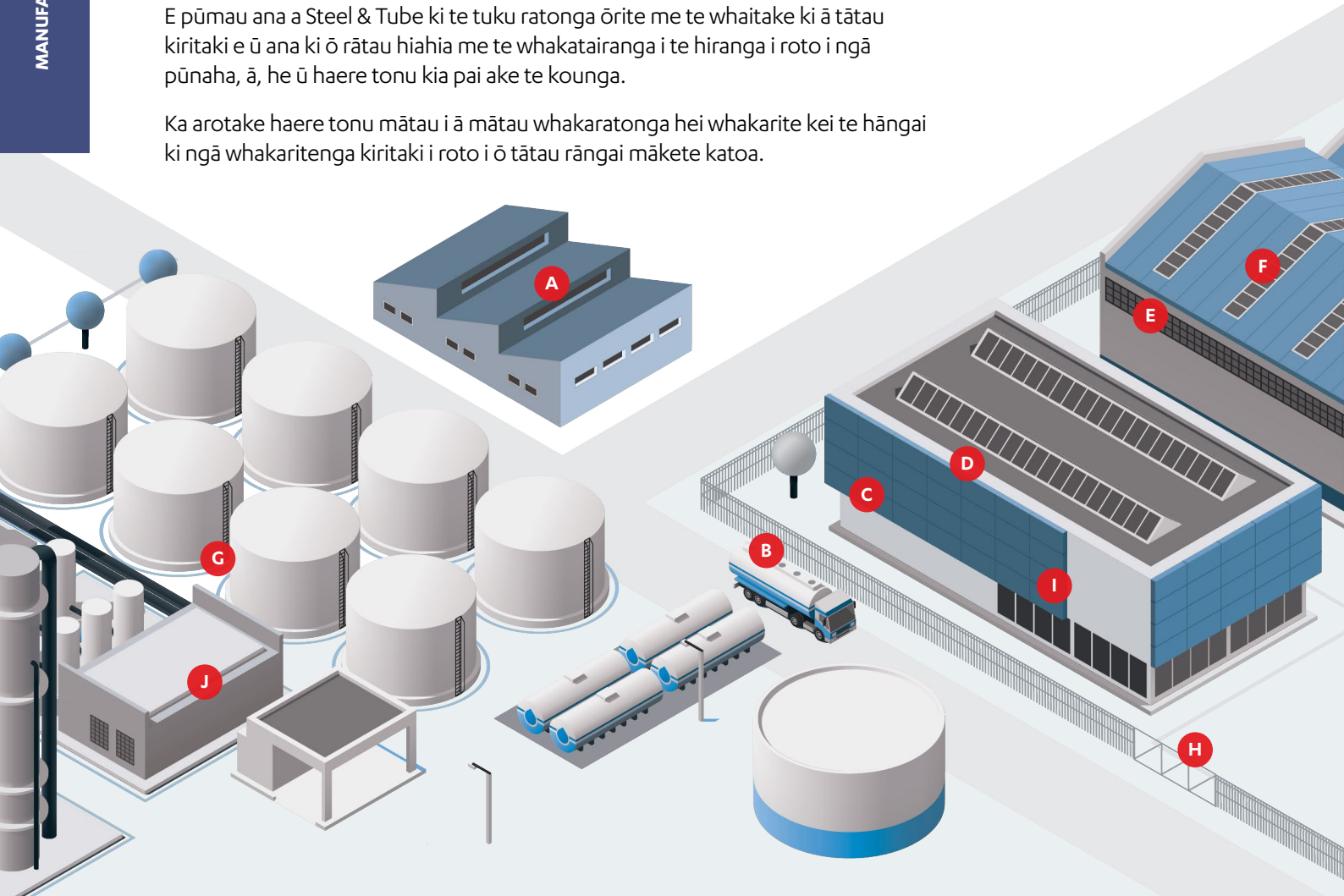


# WHAKANAO ME TE AHUMAHI

- MAITAI WAIKURA-KORE • MAITAI
- NGĀ TAUTOKO PAIPA ME TE WAEA
- MEKAMEKA ME TE PŪNAHA TAURA • MAHI TAIEPA
- WHAKAKIKĪ • NGĀ PAIPA WAI ME NGĀ MANGA

E pūmau ana a Steel & Tube ki te tuku ratonga ōrite me te whaitake ki ā tātau kiritaki e ū ana ki ō rātau hiahia me te whakatairanga i te hiranga i roto i ngā pūnaha, ā, he ū haere tonu kia pai ake te kounga.

Ka arotake haere tonu mātau i ā mātau whakararanga hei whakarite kei te hāngai ki ngā whakaritenga kiritaki i roto i ō tātau rāngai māketē katoa.



## NGĀ KAUPAPA

- › Kaupapa Miraka Pōkeno, Pōkeno - Maitai Waikura-Kore
- › Whare Waina O Delegats, Te Matau-A-Māui - Wairau / Maitai Waikura-Kore
- › Helius Therapeutics, Tāmaki Makaurau – Paipa me Ngā Waea
- › Lion Breweries, Tāmaki Makaurau - Maitai Waikura-Kore
- › Asahi Brewery, Tāmaki Makaurau - Maitai Waikura-Kore
- › Taonga Ā-Whare Me Te Taitapa
- › Tukatuka Kai
- › Hau Me Te Pūnaha Waipēhi
- › Te Hiki Me Te Whāwhā Taputapu
- › Te Moana Me Te Hanga Waka Moana
- › Rongoā Me Te Matū
- › Pūkaha Arowhānui
- › Whakamarutanga Ahi

Tirohia te whānuitanga o ngā hua i [www.steelandtube.co.nz/products](http://www.steelandtube.co.nz/products)

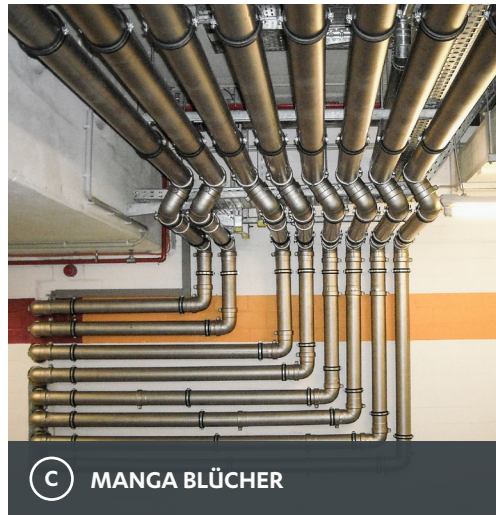




**A** PŪNIKO ME TE HĪTI WAIKURA-KORE



**B** PŪNIKO WAIKURA-KORE



**C** MANGA BLÜCHER



**D** NGONGO ME NGĀ WHAKAMAUNGA AKUAKU



**E** NGĀ TAUTOKO PAIPA ME TE WAEA



**F** HĪTI WAIKURA-KORE



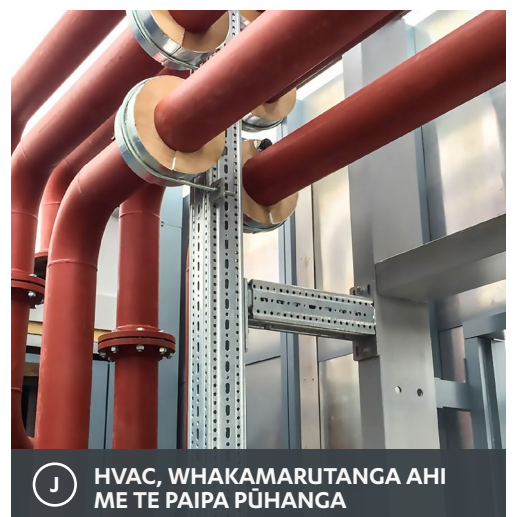
**G** TAKIRERE



**H** NGĀ KĒTI HAUMARUTANGA



**I** TAIAWA ME TE RAUMATA RINO BLÜCHER



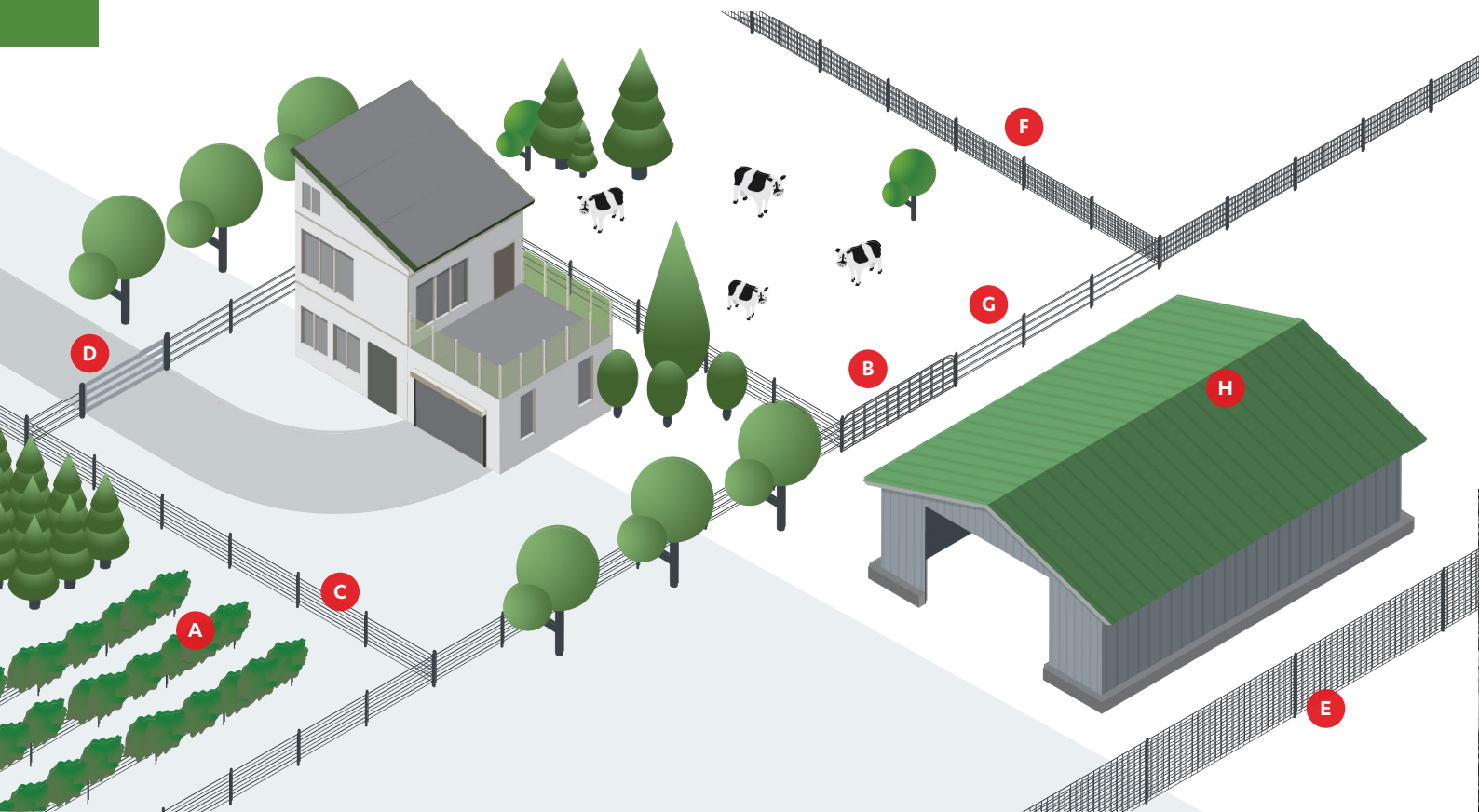
**J** HVAC, WHAKAMARUTANGA AHI ME TE PAIPA PŪHANGA



# TUAWHENUA

- MAITAI WAIKURA-KORE • RAUMATA ME TE WHAKAKAHA
- MAITAI • WHAKAKIKĪ • MEKAMEKA ME TE PŪNAHA TAURA
- NGĀ TAUTOKO PAIPA ME TE WAEA
- TUANUI ME NGĀ PAPAPĀTŪ O WAHO

Neke atu i te 80 tau e whakarato ana a Hurricane i ngā tūmomo hua tino kounga, wā roa te pakari i te taiao kino o Aotearoa. E whakaratoa ana e Steel & Tube ngā hua hei tautoko i ngā ahumahi hira o te ahuwahenua, ahumāra me te ahuwaina o Aotearoa.



## NGĀ KAUPAPA

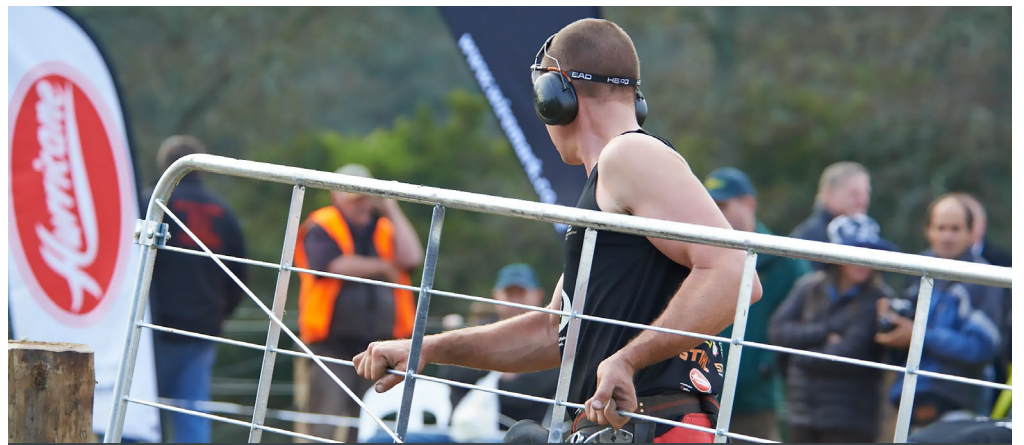
- › Ngā Hēte Hanganga Motuhake, Te Waipounamu - Tuanui
- › Cartwright, Kirikiriroa - Raumata Me Te Whakakaha
- › TE HĒTE CARLYON, Kirikiriroa - Raumata Me Te Whakakaha
- › Pāmu Heihei Novasteel, Te Waipounamu - Tuanui Me Te Papapātū O Waho
- › Ngā Whare Hei Me Ngā Whare Hoiho
- › Ngā Pāmu Waina
- › Ngā Whare Manga
- › Whare Whakaputu
- › Ngā Whare Kuti Hipi
- › Ngā Kapohau
- › Ngā Hēte Heihei
- › Whakahaere Kararehe

Tirohia te whānuitanga o ngā hua i [www.steelandtube.co.nz/products](http://www.steelandtube.co.nz/products)





**A** AHUWAINA



**B** NGĀ TŪMOMO KĒTI WHĀNUI



**C** WAEA TAIIPA



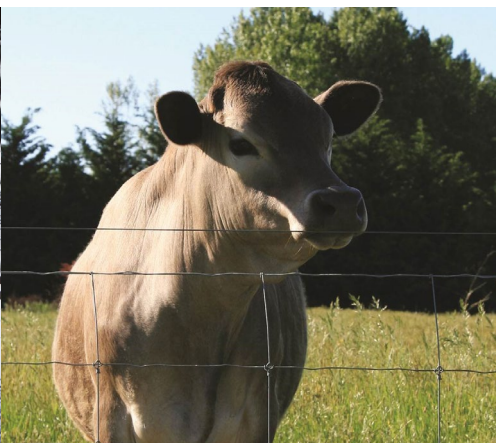
**D** NGĀ TAPUTAPU KĒTI



**E** TAIIPA TIA



**F** TAIIPA PĀMU



**G** NGĀ PAEREWĀ TAIIPA



**H** TUANUI ME NGĀ PAPAPĀTŪ O WAHO





# E PŪMAU ANA KI TE KOUNGA, HAUMARU ME TE TOITŪTANGA

## KOUNGA

Ko te whakarato i ngā hua kounga e ū ana, e tohipa ana i ngā tūmanako o ngā kiritaki ia te wā, ia te wā te mea hira ki te angitu o Steel & Tube. E arotahi ana ngā rōpū pūkenga-maha ki te whakarite kei te ū ki ā tātau paerewa tino kounga. E aroturuki ana mātau me te tātari i te hua hei whakarite kei te ū ki ngā whakaritenga waeture. Ka whakahaerehia ngā ōtita ā-roto hei whakarei ake i ngā kaha o Steel & Tube, kia pai ake te tautuku me te whakaatu i te pūmau o te whakapai ake.

### WHAI TIWHIKETE ISO 9001:2015

Ka whiwhi tiwhikete ISO 9001:2015 a Steel & Tube Holdings puta noa i ngā wāhanga pakihiko katoa i te tau 2021. Ko tēnei paerewa te pou tarāwaho whakahaere kounga tikanga mahi pai rawa, ā e whakaatu ana i te paiherenga o Steel & Tube ki te whakatutuki i ngā hiahia o ngā kiritaki me te hunga whai pānga me ngā tūmanako mā te kounga me te whakapai ake haere tonu.

Ka whakahaerehia te aromatawai me te tuku tiwhikete e ngā tohunga motuhake e mātau ana ki ngā pūnaha whakahaere kounga, me te aroturuki me te whakapai ake haere tonu i ngā

tikanga kounga ka whakahaerehia puta noa i roto i ngā whakahaere katoa a Steel & Tube.

### TE WHAKAŪ I NGĀ HUA WHAI KOUNGA

I roto i te rautaki a Steel & Tube kia noho ko te kounga ki runga rawa, kua whakamahia a Lloyd's Register ki te whakahaere i ngā aromatawai o ngā kaiwhakarato hira o tāwāhi me konei a Steel & Tube i roto o Ahia-Te Moananui-a-Kiwa

### TŪTOHINGA KAITOHATOHA MAITAI HANGANGA

Ko te Tūtohunga Kaitohutohu Maitai Hanganga te kaupapa whakaū kounga hou rawa e arahina ana e te ahumahi maitai hanganga. E whakarite ana te Tūtohunga i ngā maitai hanganga i whakaratoa ki te rāngai hangatanga ka tīkina mā ngā tikanga whai rawa pai rawa: he whakaatu i te tohu hiranga o ngā kaitohutohu maitai hanganga i Aotearoa

I whakawhiwhia a Steel & Tube ki te tiwhikete tūtohi a Steel Construction NZ (SCNZ) i te Ākuhata 2019.



Quality  
ISO 9001



He tomokanga wāhi kotahi a BIM-spec™ mō ngā kōrero whakatakotoranga me te hangarau. He whakarato i tētahi puna nui o ngā kōrero 2D me te 3D CAD me ngā taurira mōhiohio hangahanga (BIM) puta noa i ngā tūmomo kāwai hua whānui a Steel & Tube. Kei roto i tēnei ko ngā puna tauwhāiti me te tauwhānui a te kaiwhakanao e tika ana mō ngā kaiwhakatakoto katoa, te kōrerorero tahi me ngā kaipūkaha waihanga me ngā mātanga/kaikirimana pūkenga.



**Ka taea te tomokanga BIM-spec mā ngā hua a te kaiwhakatakoto kei te paetukutuku: [www.steelandtube.co.nz/specifiers](http://www.steelandtube.co.nz/specifiers)**



# HAUMARU

E arotahi ana a Steel & Tube ki te whakarite ka whakahaerehia e ngā kaimahi katoa a Steel & Tube i ā rātau mahi mā tētahi tikanga haumarū me te tōtika, ā, kia hoki pai atu rātau ki ō rātau kāinga i te mutunga o te rā.

I roto i te whakapau kaha a Steel & Tube kia eke ki te hiranga o te Kōunga, Hauora, Haumarū, me te Taiao (HSE), he tino nui te haumitanga ki te waihanga, te tuku mahi me te whakangungu i ngā kaimahi pai rawa ki te ārahi i ngā mahi QHSET (Kōunga, Hauora, Haumarū, Taiao me te Whakangungu).

E arotahi ana te kamupene ki te

whakapai ake i te mahinga HSE me te whai tonu kia eke ki ngā taumata tiketike o ngā paerewa tiketike me ngā tikanga pai rawa o te ao.

Ko te mea hira mō tēnei ko te whakarite he haumarū te wāhi mahi. Kua oti tētahi aromatawai whakamarū mīhini ā-motu me te kaupapa arotautanga, mā te whakamahi i te AS/NZS 4024 hei taumata mō te tautuku i te taha o ngā paerewa mīhini tauwhāiti hāngai me ngā aratohu tikanga pai rawa a WorkSafe.

I tua atu i tēnei, kei te hangaia e Steel & Tube tētahi kaupapa ārai pakari hei

whakaiti i te rarunga me te hēnga o ngā rawa, te whakaiti i te wā tārewa, te whakapai ake i te haumarū, te whakaroa ake i te ora o ngā rawa me te whakapai ake i te whakaputanga mā ngā kiritaki.

E kore rawa a Steel & Tube e rata ki ngā takahitanga haumarū, ā, ka tūhura i ngā raruraru katoa mā tētahi tukanga tūhuratanga 'hōhonu ake' i raro i te whakahaere a te Tumuaki. Mā tēnei ka taea e ngā tāngata hira te whai papanga mō te raruraru / hauata me te whai haepapa mō te whakahaere tōtika i ngā mahi whakatikatika.

## TE WAIHANGA I TĒTAHI PAKIHI TOITŪ



- › TE KUKUME MAI ME TE PUPURI KAIMAHI
- › WHANAKETANGA TANGĀTA ME NGĀ TIKANGA MAHI
- › AHUREA ORANGA



- › MAHINGA O TE HURINGA HUATAONGA
- › TE RATA O TE KIRITAKI



- › HAUMARU ME TE HAUORA Ā-MAHI
- › NGĀ HUA ME NGĀ RATONGA TINO KOUNGA



- › WHAKAATURANGA PŪTEA ME TE MANA WHAKAHAERE RANGATŌPŪ
- › TŌTIKATANGA RAWA ME TE HANGARUA
- › PŪNGAO ME TE WARO

### HEI PAKIHI WHAKAHĪ NŌ AOTEAROA, E PŪMAU ANA MĀTAU KI TE WAIHANGA I TĒTAHI KAMUPENE TOITŪ E HANGA ANA I TE UARA WĀ ROA MŌ Ā MĀTAU KIRITAKI, KAIMAHI, KAIWHAIPĀNGA ME NGĀ HAPORI.

Mō Steel & Tube, ko te tikanga o tēnei ko te whai whakaaro ki tō mātau paiherenga ki ā mātau tāngata, hapori hoki, tō mātau pānga taiao, me te matatika o te whakahaere i tā mātau pakihi kia hāngai ki ngā tikanga pai rawa o te mana whakahaere.

10 ngā wāhi kua tautuhia e mātau e whakapono ana mātau he mea taketake ki te whakarite i tētahi

anamata toitū mō tā mātau kamupene, ā, e hāngai ana ēnei ki ā mātau pou rautaki.

Kei te wāhanga tīmata a Steel & Tube i tōna ara hei whakahaere toitū ake. Haere ake nei, kei te kōkirihia e mātau ngā huringa mā te waihanga kaupapa, ngā whāinga me ngā inenga hei āwhina ki te whakatutuki i ā mātau whāinga.





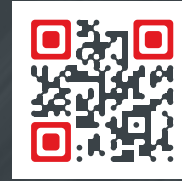
# NGĀ OTINGA MAITAI Ā-MOTU

E whakaratoa ana a Steel & Tube i ngā tūmomo hua whānui, tāpiri hoki mā tētahi kōtuinga tohatoha me te tukatuka ā-motu, nō reira ahakoa kei hea koe i te motu ka taea e mātau te tuku hua ki a koe.

He tohunga mātau o ēnei āhuatanga, ā, he mea nui ki a mātau te tuku i tētahi wheako kiritaki pito ki te pito ōrite, te tohutohu, te rapu me te whakarato i ngā whakaritenga maitai ki ā mātau kiritaki. Ā, ko te tūāpapa o ā mātau mahi katoa, e pūmau ana kia kounga katoa.

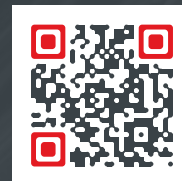
## WAEA MAI I TĒNEI RĀ KI TE KŌRERO MŌ TŌ KAUPAPA

Maitai	0800 478 335
Waikura-Kore	0800 426 787
Raumata me te whakakaha Reo	0800 478 335
Ngā kaupapa whakakaha	09 622 9593
Tuanui me ngā papapātū o waho	0800 427 663
Mekameka me te pūnaha taura	0800 100 260
Ngā Kurupae	0800 278 754
Pūnaha wai, ngā paipa me ngā tautoko waea	0800 474 735
Tuawhenua me te mahi taiepa a Hurricane	0800 800 947
Comflor – Whakapā ki CFDL	0508 332 546
Ngā Whakakikī Fortress	0800 425 262



## TIROHIA Ō MĀTAU WĀHI

[steelandtube.co.nz/location](https://steelandtube.co.nz/location)



## TIROHIA Ā MĀTOU TŪMOMO HUA

[steelandtube.co.nz/products](https://steelandtube.co.nz/products)



## WHAKAPĀ MAI KI A MĀTOU

[steelandtube.co.nz/contact](https://steelandtube.co.nz/contact)

[steelandtube.co.nz](https://steelandtube.co.nz)



Whai mai i a mātau i  
[linkedin.com/company/  
steel-and-tube](https://linkedin.com/company/steel-and-tube)